

NETX INFORMATION SYSTEMS, INC.

Product Sales (609) 298-9118 866-638-9462
Professional Services sales@netxinc.com
Authorized Training www.netxinc.com



Symantec Suite of Security Products

IT Management Suite (ITMS)

Managing and protecting your endpoints begins with knowing which devices and software are being used and who's using them in your environment.

Taking advantage of partnership with Symantec, NetX helps IT Professionals save time and money by installing and configuring the right IT Management Suite (ITMS) to provide the visibility required to securely and efficiently manage the entire lifecycle of desktops, laptops, and servers across Windows, Mac, Linux, Unix, and virtual environments including deployment, patch, and asset management to reduce costs and increase productivity.

Feature	Function	Benefit
Discovery & Inventory	Know what devices and software are being used	Visibility. Can't manage or protect what you can't see.
Asset management	Manage assets from deployment to retirement	Improve efficiency, reduce costs
Deployment	Deploy or update new software and devices	Streamline, automate, simplify process
Software license mgmt	Manage, track, reclaim software licenses	Uncover savings, prepare for audits, stay compliant
Patch management	Update software to protect against vulnerabilities	Protect your environment
Integration with SEP Cloud	Brings data from SEP Cloud into ITMS (on-prem)	Unified view across all devices whether modern, traditional, corporate owned, or BYOD

Advanced Threat Protection (ATP)

NetX and Symantec have joined forces to bring the right solution to help protect against new malware campaigns that are being launched every day. Symantec Advanced Threat Protection (ATP) is a single unified solution that uncovers, prioritizes, and remediates advanced attacks, leveraging an organization's existing Symantec™ Endpoint Protection and Symantec™ Email Security.cloud investments. It fuses intelligence from endpoints, networks, and email, as well as Symantec's massive global sensor network, to stop threats that evade individual point products.

Training

NetX offers authorized training classes focusing on the full Symantec suite of products. www.netxinc.com/training

Endpoint Protection

The cost of a data breach can throw businesses into turmoil and derail careers. This cost continues to rise and the potential for significant damage is massive.

NetX and Symantec partnership brings you superior protection. Symantec Endpoint (SEP) moves your organization from the reactive to a proactive stage, by addressing today's threat landscape with a comprehensive approach that spans the attack chain and provides defense in depth.

Utilizing the world's largest civilian threat intelligence network, Symantec Endpoint Protection 14 can effectively stop advanced threats with next generation technologies that apply advanced machine-learning, file reputation analysis, and real-time behavioral monitoring.

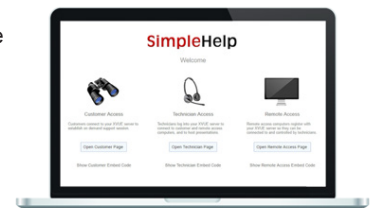


Data Loss Prevention (DLP)

Sensitive information is leaving the safety of your corporate environment as more employees share files over consumer cloud storage services and access those files on their own mobile devices. NetX and Symantec have partnered up to ensure your sensitive corporate information is kept safe, compliant, and out of the wrong hands.

SimpleHelp

NetX has formed a strategic alliance with SimpleHelp® to jointly market SimpleHelp's suite of products to customers worldwide.



SimpleHelp® controls remote users on-demand, monitors remote systems and receives alerts when they need maintenance.

SimpleHelp® 5.0 is a stand-alone product with Standard, Business, and Enterprise editions designed for customers of all sizes and integrates with 3rd party solutions.

The XVUE® brand will be replaced with the SimpleHelp® suite of products.

Consulting

NetX's offers certified engineers to work closely with our customers to help with IT operations to secure their environments.

www.netxinc.com/professional-services/

